



Policy for

Anti-bullying

Prepared by:	Approved by Board of Directors
CEO	Autumn 2023

Contents:

Statement of intent

1. Definitions
2. Types of bullying
3. Roles and responsibilities
4. Statutory requirements
5. Prevention
6. Signs of bullying
7. Staff principles
8. Child-on-child abuse
9. Cyberbullying
10. Procedures
11. Sanctions
12. Support
13. Follow-up support
14. Bullying outside of school
15. Record keeping
16. Monitoring and review

Appendices

- A. Kiva report form
- B. Flow Chart of KIVA Process
- C. Details about further KiVa forms and process

Statement of intent

All AET policies are written to support our schools and communities. We do this by ensuring they are always in line with our Colleague Values:



Applying these values to everything we do means always acting with integrity, in the interests of others, being honest, open and transparent and putting the safety of our children first.

The Aspire Educational Trust believes that all pupils are entitled to learn in a safe and supportive environment; this means being free from all forms of bullying behaviour. This policy outlines how instances of bullying are dealt with, including the procedures to prevent occurrences of bullying.

These strategies, e.g. learning about tolerance and difference as part of the school's curriculum, aim to promote an inclusive, tolerant and supportive ethos at the school.

The Education and Inspections Act 2006 outlines several legal obligations regarding the school's response to bullying. Under section 89, schools must have measures in place to encourage good behaviour and prevent all forms of bullying amongst pupils. These measures are part of the school's Behaviour Policy, which is communicated to all pupils, school staff and parents.

All staff, parents and pupils work together to prevent and reduce any instances of bullying at the school. There is a zero-tolerance policy for bullying at the school.

1. Definitions

For the purpose of this policy, “bullying” is defined as persistent behaviour by an individual or group with the intention of verbally, physically, or emotionally harming another person or group. Bullying is generally characterised by:

- **Repetition:** Incidents are not one-offs; they are frequent and happen over an extended period of time.
- **Intent:** The perpetrator means to cause verbal, physical or emotional harm; it is not accidental.
- **Targeting:** Bullying is generally targeted at a specific individual or group.
- **Power imbalance:** Whether real or perceived, bullying is generally based on unequal power relations.

Vulnerable pupils are more likely to be the targets of bullying due to the attitudes and behaviours some young people have towards those who are different from themselves. Vulnerable pupils may include, but are not limited to:

- Pupils who are adopted.
- Pupils suffering from a health problem.
- Pupils with caring responsibilities.
- Pupils from socioeconomically disadvantaged backgrounds.

Pupils with certain characteristics are also more likely to be targets of bullying, including, but not limited to:

- Pupils who are LGBTQI+, or perceived to be LGBTQI+.
- Black, Asian and minority ethnic pupils.
- Pupils with SEND.

2. Types of bullying

Many kinds of behaviour can be considered bullying, and bullying can be related to almost anything. Teasing another pupil because of their appearance, religion, ethnicity, gender, sexual orientation, home life, culture, or SEND are some of the types of bullying that can occur.

Bullying is acted out through the following mediums:

- Verbal
- Physical
- Emotional
- Online (cyberbullying)

Racist bullying: Bullying another person based on their ethnic background or skin colour. Racist bullying is a criminal offence under the Crime and Disorder Act 1998 and Public Order Act 1986.

Homophobic and biphobic bullying: Bullying another person because of their actual or perceived sexual orientation.

Transphobic bullying: Bullying based on another person's gender identity or gender presentation, or for not conforming to dominant gender roles.

Sexist bullying: Bullying based on sexist attitudes expressed in a way to demean, intimidate or harm another person because of their sex or gender. Sexist bullying may sometimes be characterised by inappropriate sexual behaviours.

Sexual bullying: Bullying behaviour that has a physical, psychological, verbal or non-verbal sexual dimension or dynamic that subordinates, humiliates or intimidates another person. This is commonly underpinned by sexist attitudes or gender stereotypes.

Ableist bullying: Bullying behaviour that focusses on another person's disability or support needs; this can include mocking the individual's disability or their needs, using derogatory words or slurs in relation to an individual's disability, or deliberately excluding an individual because of their disability.

Prejudicial bullying: Bullying based on prejudices directed towards specific characteristics or experiences, e.g. religion or mental health issues.

Relational bullying: Bullying that primarily constitutes of excluding, isolating and ostracising someone – usually through verbal and emotional bullying.

Socioeconomic bullying: Bullying based on prejudices against the perceived social status of the victim, including, but not limited to, their economic status, their parents' occupations, their health or nutrition level, or the perceived "quality" of their clothing or belongings.

3. Roles and responsibilities

The LAC is responsible for:

- Evaluating and reviewing this policy to ensure that it does not discriminate against any pupils on the basis of their protected characteristics or backgrounds.
- The overall implementation and monitoring of this policy.
- Ensuring that all governors are appropriately trained regarding safeguarding and child protection at induction.
- Ensuring that the school adopts a tolerant and open-minded policy towards difference.
- Ensuring the school is inclusive.
- Analysing any bullying data to establish patterns and reviewing this policy in light of these.
- Ensuring the DSL has the appropriate status and authority within the school to carry out the duties of the role.
- Appointing a safeguarding link governor who will work with the DSL to ensure the policies and practices relating to safeguarding, including the prevention of cyberbullying, are being implemented effectively.
- Ensuring that pupils are taught how to keep themselves and others safe, including online.

The headteacher/principal is responsible for:

- Reviewing and amending this policy, accounting for new legislation and government guidance, and using staff experience of dealing with bullying incidents in previous years to improve procedures.
- Keeping a Bullying Report Form of all reported incidents, including which type of bullying has occurred, to allow for proper analysis of the data collected.
- Analysing the data in the bullying record at termly intervals to identify trends, so that appropriate measures to tackle them can be implemented.
- Arranging appropriate training for staff members.

Heads of year are responsible for:

- Corresponding and meeting with parents where necessary.
- Providing a point of contact for pupils and parents when more serious bullying incidents occur.

Teachers are responsible for:

- Being alert to social dynamics in their class.
- Being available for pupils who wish to report bullying.
- Providing follow-up support after bullying incidents.
- Being alert to possible bullying situations, particularly exclusion from friendship groups, and informing the pupil's heads of year of such observations.
- Refraining from stereotyping when dealing with bullying.
- Understanding the composition of pupil groups, showing sensitivity to those who have been the victims of bullying.
- Reporting any instances of bullying once they have been approached by a pupil for support.

Parents are responsible for:

- Informing their child's head of year or form tutor if they have any concerns that their child is the victim of bullying or involving in bullying in anyway.
- Being watchful of their child's behaviour, attitude and characteristics and informing the relevant staff members of any changes.

Pupils are responsible for:

- Informing a member of staff if they witness bullying or are a victim of bullying.
- Not making counter-threats if they are victims of bullying.
- Walking away from dangerous situations and avoiding involving other pupils in incidents.
- Keeping evidence of cyberbullying and informing a member of staff should they fall victim to cyberbullying.

4. Statutory requirements

The school understands that, under the Equality Act 2010, it has a responsibility to:

- Eliminate unlawful discrimination, harassment, including sexual harassment, victimisation and any other conduct prohibited by the act.
- Advance equality of opportunity between people who share a protected characteristic and people who do not share it.
- Foster good relations between people who share a protected characteristic and people who do not share it.

The school understands that, under the Human Rights Act (HRA) 1998, it could have charges brought against it if it allows the rights of pupils to be breached by failing to take bullying seriously. The headteacher/principal will ensure that this policy complies with the HRA; the headteacher/principal understands that they cannot do this without fully involving their teaching staff.

Although bullying itself is not a criminal offence, some types of harassment, threatening behaviour and/or communications may be considered criminal offences:

- Under the Malicious Communications Act 1988, it is an offence for a person to electronically communicate with another person with the intent to cause distress or anxiety, or in a way which conveys a message which is indecent or grossly offensive, a threat, or contains information which is false and known or believed to be false by the sender.
- The Protection from Harassment Act 1997 makes it an offence to knowingly pursue any course of conduct amounting to harassment.
- Section 127 of the Communications Act 2003 makes it an offence to send, by means of a public electronic communications network, a message, or other matter, that is grossly offensive or of an indecent, obscene or menacing character. It is unlawful to disseminate defamatory information through any media, including internet sites.
- Other forms of bullying which are illegal and should be reported to the police include violence or assault, theft, repeated harassment or intimidation, and hate crimes.

5. Prevention

The school will clearly communicate a whole-school commitment to addressing bullying and have a clear set of values and standards which will be regularly promoted across the whole school.

All members of the school will be made aware of this policy and their responsibilities in relation to it. All staff members will receive training on identifying and dealing with the different types of bullying.

The curriculum will explore and discuss issues at age-appropriate stages such as:

- Healthy and respectful relationships.
- Boundaries and consent.
- Stereotyping, prejudice and equality.
- Body confidence and self-esteem.
- How to recognise abusive relationships and coercive control.
- Harmful sexual behaviour, the concepts involved and why they are always unacceptable, and the laws relating to it.

Staff will encourage pupil cooperation and the development of interpersonal skills using group and pair work. Diversity, difference and respect for others will be promoted and celebrated through various lessons. Opportunities to extend friendship groups and interactive skills will be provided through participation in special events, e.g. drama productions, sporting activities and cultural groups.

Seating plans will be organised and altered in a way that prevents instances of bullying. Potential victims of bullying will be placed in working groups with other pupils who do not abuse or take advantage of others.

A safe place, supervised by a teacher, will be available for pupils to go to during free time if they feel threatened or wish to be alone. The teacher supervising the area will speak to pupils to find out the cause of any problems and, ultimately, stop any form of bullying taking place.

Before a new pupil joins the school, particularly when this happens in-year, the pupil's form tutor and the DSL will implement a strategy to prevent bullying from happening. Where a new pupil is deemed vulnerable, this strategy may involve further observation or intervention on the part of the DSL.

The school will be alert to, and address, any mental health and wellbeing issues amongst pupils, as these can be a cause, or a result, of bullying behaviour.

The school will ensure potential perpetrators are given support as required, so their educational, emotional and social development is not negatively influenced by outside factors, e.g. mental health issues.

6. Signs of bullying

Staff will be alert to the following signs that may indicate a pupil is a victim of bullying:

- Being frightened to travel to or from school
- Unwillingness to attend school
- Repeated or persistent absence from school
- Becoming anxious or lacking confidence
- Saying that they feel ill repeatedly
- Decreased involvement in school work
- Leaving school with torn clothes or damaged possessions
- Missing possessions
- Missing dinner money
- Asking for extra money or stealing
- Cuts or bruises
- Lack of appetite
- Unwillingness to use the internet or mobile devices
- Lack of eye contact
- Becoming short tempered
- Change in behaviour and attitude at home

Although the signs outlined above may not be due to bullying, they may be due to deeper social, emotional or mental health issues, so are still worth investigating. Pupils who display a significant number of these signs will be approached by a member of staff to determine the underlying issues causing this behaviour.

Staff will be aware of the potential factors that may indicate a pupil is likely to exhibit bullying behaviours, including, but not limited to, the following:

- They have experienced mental health problems, which have led to them becoming more easily aggravated
- They have been the victim of abuse
- Their academic performance has started to fall and they are showing signs of stress

If staff become aware of any factors that could lead to bullying behaviours, they will notify the pupil's form tutor, who will investigate the matter and monitor the situation.

7. Staff principles

The school will ensure that prevention is a prominent aspect of its anti-bullying vision.

Staff will treat reports of bullying seriously and will not ignore signs of suspected bullying. Staff will act immediately when they become aware of a bullying incident. Unpleasantness from one pupil towards another will always be challenged and will never be ignored.

Staff will always respect pupils' privacy, and information about specific instances of bullying is not discussed with others, unless the pupil has given consent, or there is a safeguarding concern. If a member of staff believes a pupil is in danger, e.g. of being hurt, they will inform the DSL immediately.

Follow-up support will be given to both the victim and perpetrator in the months following an incident to ensure all bullying has stopped.

8. Child-on-child abuse

The school has a zero-tolerance approach to all forms of child-on-child abuse, including sexual harassment and sexual violence.

To prevent child-on-child abuse and address the wider societal factors that can influence behaviour, the school will educate pupils about abuse, its forms, and the importance of discussing any concerns and respecting others through the curriculum, assemblies and PSHE lessons, in line with the [Prevention](#) section of this policy.

All staff will:

- Be aware that pupils of any age and gender are capable of abusing their peers.
- Be aware that abuse can occur inside and outside of school settings.
- Be aware of the scale of harassment or abuse, and that just because it is not being reported does not mean it is not happening.
- Take all instances of child-on-child abuse equally seriously regardless of the characteristics of the perpetrators or victims.

- Never tolerate abuse as “banter” or “part of growing up”, and will never justify sexual harassment, e.g. as “boys being boys”, as this can foster a culture of unacceptable behaviours and one that risks normalising abuse.
- Be aware that child-on-child abuse can be manifested in many ways, including sexting, sexual harassment and assault, and hazing or initiation-type violence.
- Always challenge any harmful physical behaviour that is sexual in nature, such as inappropriate touching. Dismissing or tolerating such behaviours risks normalising them.

Sexual harassment in particular can take many forms, including but not limited to:

- Telling sexual stories, making sexual remarks, or calling someone sexualised names.
- Sexual “jokes” or taunting.
- Deliberately brushing against someone.
- Displaying images or video of a sexual nature.
- Up skirting (this is a criminal offence).
- Online sexual harassment, e.g. creating or sharing sexual imagery, sexual comments on social media, or sexual coercion or threats.

Pupils will be made aware of how to raise concerns or make a report and how any reports will be handled – this includes the process for reporting concerns about friends or peers. If a pupil has been harmed, is in immediate danger or is at risk of harm, a referral may be made to children’s social care services (CSCS) and potentially the police, where the DSL deems this appropriate in the circumstances.

All staff will be aware and sensitive towards the fact that pupils may not be ready or know how to tell someone that they are being abused. Pupils being abused may feel embarrassed, humiliated, scared, or threatened.

The school’s Child-on-child Abuse Policy outlines the school’s stance on addressing child-on-child abuse, including sexual abuse, and the procedures in place will be adhered to if any instances are uncovered or disclosed. More information on the school’s approach to preventing and managing instances of child-on-child abuse can be found within this policy and the Child Protection and Safeguarding Policy.

9. Cyberbullying

Cyberbullying can take many forms and can go even further than face-to-face bullying by invading personal space and home life, and can target more than one person. It can also take place across age groups and target pupils, staff and others, and may take place inside school, within the wider community, at home or when travelling. It can sometimes draw bystanders into being accessories.

Cyberbullying can include the following:

- Threatening, intimidating or upsetting text messages
- Threatening or embarrassing pictures and video clips
- Disclosure of private sexual photographs or videos with the intent to cause distress
- Silent or abusive phone calls

- Using the victim's phone to harass others, to make them think the victim is responsible
- Threatening or bullying emails, possibly sent using a pseudonym or someone else's name
- Menacing or upsetting responses to someone in a chatroom
- Unpleasant messages sent via instant messaging
- Unpleasant or defamatory information posted to blogs, personal websites and social networking sites, e.g. Facebook

NB. The above list is not exhaustive, and cyberbullying may take other forms.

The school has a zero-tolerance approach to cyberbullying. The school views cyberbullying with the same severity as any other form of bullying and will follow the sanctions set out in this policy if they become aware of any incidents.

All members of staff will receive training on the signs of cyberbullying, in order to identify pupils who may be experiencing issues and intervene effectively.

Many of the signs of cyberbullying will be similar to those found in the '[Signs of bullying](#)' section of this policy; however, staff will be alert to the following signs that may indicate a pupil is being cyberbullied:

- Avoiding use of the computer
- Being on their phone routinely
- Becoming agitated when receiving calls or text messages

Staff will also be alert to the following signs which may indicate that a pupil is cyberbullying others:

- Avoiding using the computer or turning off the screen when someone is near
- Acting in a secretive manner when using the computer or mobile phone
- Spending excessive amounts of time on the computer or mobile phone
- Becoming upset or angry when the computer or mobile phone is taken away

Parents will also be invited to attend training sessions in order to educate them on the signs and symptoms of cyberbullying, and will be advised to report to the headteacher/principal if their child displays any of the signs outlined in this section.

All learning at home will follow procedures outlined in the AET Guidance for safety in Remote Online Video & Telephone Communication. During times when remote education is being utilised, the school will frequently be in contact with parents to make them aware of their activities online, but also to reinforce the importance of pupils staying safe online, and explaining how filtering and monitoring procedures work.

Staff will be aware that a cyberbullying incident might include features different to other forms of bullying, prompting a particular response. Significant differences may include the following:

- **Possible extensive scale and scope** – pupils may be bullied on multiple platforms and using multiple different methods that are made possible by virtue of the bullying taking place online

- **The anytime and anywhere nature of cyberbullying** – pupils may not have an escape from the torment when they are at home due to the bullying continuing through technology at all times
- **The person being bullied might not know who the perpetrator is** – it is easy for individuals to remain anonymous online and on social media, and pupils may be bullied by someone who is concealing their own identity
- **The perpetrator might not realise that their actions are bullying** – sometimes, the culture of social media, and the inability to see the impact that words are having on someone, may lead to pupils crossing boundaries without realising
- **The victim of the bullying may have evidence of what has happened** – pupils may have taken screenshots of bullying, or there may be a digital footprint that can identify the perpetrator

Staff and pupils will be instructed not to respond or retaliate to cyberbullying incidents. Evidence of the incident should be recorded, e.g. taking screenshots. Staff will report incidents to their line manager or the headteacher/principal for the incident to be investigated and support to be provided. Pupils will report incidents to a trusted member of staff.

Where offensive content is posted online targeting a staff member or pupil, the person targeted will be encouraged to use the reporting mechanism on the website or social media platform to request its removal. Where the person who has posted it is known to the school, the headteacher/principal will request they remove it directly.

The school will support pupils who have been victims of cyberbullying by holding formal and informal discussions with the pupil about their feelings and whether the bullying has stopped, in accordance with this policy.

In accordance with the Education Act 2011, the school has the right to examine and delete files from pupils' personal devices, e.g. mobiles phones, where there is good reason to do so. This power applies to all schools and there is no need to have parental consent to search through a young person's mobile phone.

10. Procedures

At Hollinhey we use the KiVa Bullying Prevention Programme to help prevent all forms of bullying. The programme was developed in Finland and has been used in the UK since 2012. The programme has been shown in large scale studies to be highly effective in reducing bullying in schools.

The KiVa 'curriculum' is taught to all classes in Key Stage 2 (years 3-6). Each lesson lasts for approximately 45 minutes and is delivered once a month. During lessons the children typically learn about respecting others, including everyone, how to function in a group and how to help someone who is being bullied. The lessons are complimented by the KiVa computer game where students go into a virtual school and practice anti-bullying actions. The goal of the curriculum work is to educate students about their role in stopping bullying. Instead of being 'silent approvers' or 'assistants to the bully', children start to support the victimised child, developing a shared sense of responsibility within the class. At the end of each lesson, each class develop and agree on an anti-bullying class rule.

In Key Stage 1 we follow the KiVa strategies and messages. We teach lessons related to friendships and anti-bullying.

Tackling bullying incidents

Hollinhey has a dedicated task force to tackle bullying, the 'KiVa Team'. The team consists of three adults in school who have been specially trained to tackle bullying incidents. For 2023 – 2024, the team are Mrs Clough, Mrs Massey, Ms Marshall-Clarke and Mrs Cusick.

When a parent or student reports a case of bullying the KiVa Team will decide if it is bullying or a conflict or fight between children. (Screening Form A).

All cases that fulfil the criteria for bullying are dealt with in a systematic way by the KiVa Team and all children involved will be spoken to individually. (See KiVa flowchart and process in Appendices)

After this, all those children who were involved in the bullying (not the victim) meet together as a group where they agree on how they will change their behaviour. Support for the victim is also identified during their meeting with the KiVa Team. Follow up discussions with all students take place after an agreed amount of time to make sure that things are improving for the victim.

All adults at the school have received basic awareness training about bullying and will report any concerns to the KiVa Team.

Parents of all those involved in a bullying situation are notified by the KiVa Team. However, discussions are primarily held between adults at the school and the students.

All incidents and reports are uploaded to C-POMS and categorised as to the nature of the incident.

The Kiva Screening form will be uploaded, even if it is not deemed Bullying by the KIVA team.

Due to the potential for some specific forms of bullying to be characterised by inappropriate sexual behaviour, staff members involved in dealing with the incident are required to consider whether there is a need for safeguarding processes to be implemented.

11. Sanctions

If the headteacher/principal is satisfied that bullying did take place, the perpetrator will be helped to understand the consequences of their actions and warned that there must be no further incidents. The headteacher/principal will inform the perpetrator of the type of sanction to be used in this instance, e.g. detentions or service-based activities, and future sanctions if the bullying continues.

If possible, the headteacher/principal will attempt reconciliation and will obtain an apology from the perpetrator. This will either be in writing to the victim, and/or witnesses if appropriate, or face-to-face, but only with the victim's full consent. Discretion will be used here; victims will never feel pressured into a face-to-face meeting with the perpetrator.

Parents are informed of bullying incidents and what action is being taken.

All staff involved in managing instances of bullying will be aware that taking disciplinary action and providing support are not mutually exclusive actions, and should be conducted simultaneously to encourage more positive behaviour in future.

The school will avoid unnecessarily criminalising pupils for bullying or abusive behaviour where possible, as young people with criminal records face stigma and discrimination in future aspects of their lives. The school's focus when handling perpetrators will be supporting them to develop more positive behaviours and to refrain from abusive and bullying behaviours in the future.

The school will remain cognisant of the fact that continued access to school can be important for rehabilitation of harmful behaviour, and will not exclude pupils unless as a last resort – where there have been serious or consistent incidents of bullying, the school will act in line with the Suspension and Exclusion Policy.

12. Support

In the event of bullying, victims will be offered the following support:

- Emotional support and reassurance from the school counsellor
- Reassurance that it was right to report the incident and that appropriate action will be taken
- Liaison with their parents to ensure a continuous dialogue of support
- Advice not to retaliate or reply, but to keep the evidence and show or give it to their parent or a member of staff
- Advice on aspects of online safety, in the event of cyberbullying, to prevent re-occurrence, including, where appropriate, discussion with their parents to evaluate their online habits and age-appropriate advice on how the perpetrator might be blocked online
- Discussion with their parent on whether police action is required (except in serious cases of child exploitation or abuse where the police may be contacted without discussion with parents)

The headteacher/principal will carefully consider in each instance of bullying that is handled whether it is appropriate to split up the victim(s) and perpetrator(s), e.g. preventing them sharing classes or spaces where possible, and will split up other harmful group dynamics to prevent further occurrences where necessary. Victims will be encouraged to broaden their friendship groups by joining lunchtime or after-school clubs or activities.

Staff, particularly the DSL, will work with the victim to build resilience, e.g. by offering emotional therapy.

The school will acknowledge that bullying may be an indication of underlying mental health issues. Perpetrators will be required to attend a mandatory counselling session to assist with any underlying mental health or emotional wellbeing issues. The school will work with the perpetrator regarding any underlying mental health or emotional wellbeing problems.

13. Follow-up support

The progress of both the perpetrator and the victim will be monitored by their teachers. One-on-one sessions to discuss how the victim and perpetrator are progressing may be appropriate. If appropriate, follow-up correspondence will be arranged with parents **one month** after the incident.

Pupils who have been bullied will be offered continuous support. The DSL will hold a formal meeting, to check whether the bullying has stopped – these formal meetings will continue to take place until the head of year and victim are confident the bullying has stopped. The victim will be encouraged to tell a trusted adult in school if bullying is repeated.

Pupils who have bullied others will be supported in the following ways:

- Receiving a consequence for their actions
- Being able to discuss what happened
- Being helped to reflect on why they became involved
- Being helped to understand what they did wrong and why they need to change their behaviour
- Appropriate assistance from parents

Pupils who have been bullied will be assessed on a case-by-case basis and the DSL will, if necessary, refer the victim of bullying to CAMHS.

In cases where the effects of bullying are so severe that the pupil cannot successfully reintegrate back into the school, the headteacher/principal and DSL will look to transfer the pupil to another mainstream school with the consent and involvement of the pupil's parents.

Where a pupil who has been the victim of bullying has developed such complex needs that alternative provision is required, the pupil, their parents, the headteacher/principal and DSL will meet to discuss the use of alternative provision.

14. Bullying outside of school

Staff will remain aware that bullying can happen both in and outside of school, and will ensure that they understand how to respond to reports of bullying that occurred outside school in line with the Child Protection and Safeguarding Policy and the Child-on-child Abuse Policy.

The headteacher/principal has a specific statutory power to sanction pupils for poor behaviour outside of the school premises. Section 89(5) of the Education and Inspections Act 2006 gives the headteacher/principal the power to regulate pupils' conduct when they are not on school premises, and therefore, not under the lawful charge of a school staff member.

Teachers have the power to sanction pupils for misbehaving outside of the school premises. This can relate to any bullying incidents occurring anywhere off the school premises, e.g. on school or public transport, outside the local shops, or in a town or village centre.

Where bullying outside school is reported to school staff, it will be investigated and acted upon. In all cases of misbehaviour or bullying, members of staff can only sanction the pupil on school premises, or elsewhere when the pupil is under the lawful control of the member of staff, e.g. on a school trip.

The headteacher/principal is responsible for determining whether it is appropriate to notify the police of the action taken against a pupil. If the misbehaviour could be of a criminal nature, or poses a serious threat to a member of the public, the police will be informed.

15. Record keeping

The DSL will ensure that robust records are kept with regard to all reported or otherwise uncovered incidents of bullying – this includes recording where decisions have been made, e.g. sanctions, support, escalation of a situation and resolutions.

The headteacher/principal and DSL will ensure that all decisions and actions recorded are reviewed on a regular basis for the purposes of:

- Identifying patterns of concerning, problematic or inappropriate behaviour on the part of certain pupils that may need to be handled, e.g. with pastoral support.
- Reflecting on whether cases could have been handled better and using these reflections to inform future practice.
- Considering whether there are wider cultural issues at play within the school, e.g. whether school culture facilitates discriminatory bullying by not adequately addressing instances, and planning to mitigate this.
- Considering whether prevention strategies could be strengthened based on any patterns in the cases that arise.
- Responding to any complaints about how cases have been handled.



APPENDIX A

Screening form for suspected bullying cases



To be filled out by the adult who is the first to know about a (suspected) bullying case

Please tick the relevant bullet points.

1. Date when bullying was reported:

2. The person (include name) who is reporting bullying:

- ◆ the victim
- ◆ peer of the victim
- ◆ victim's Parent or Carer
- ◆ teacher/staff member
- ◆ someone else

3. Bullied student _____ Class: _____

4. What type of suspected bullying behaviour has occurred? Please give concrete examples about

situations.

5. How many times has this occurred? _____

6. When was the last time this occurred? _____

7. How long has this suspected bullying been going on?

8. Students who have actively taken part in suspected bullying:

Name _____ Name _____

Name _____ Name _____

Name _____ Name _____

Signed by person completing this form Date

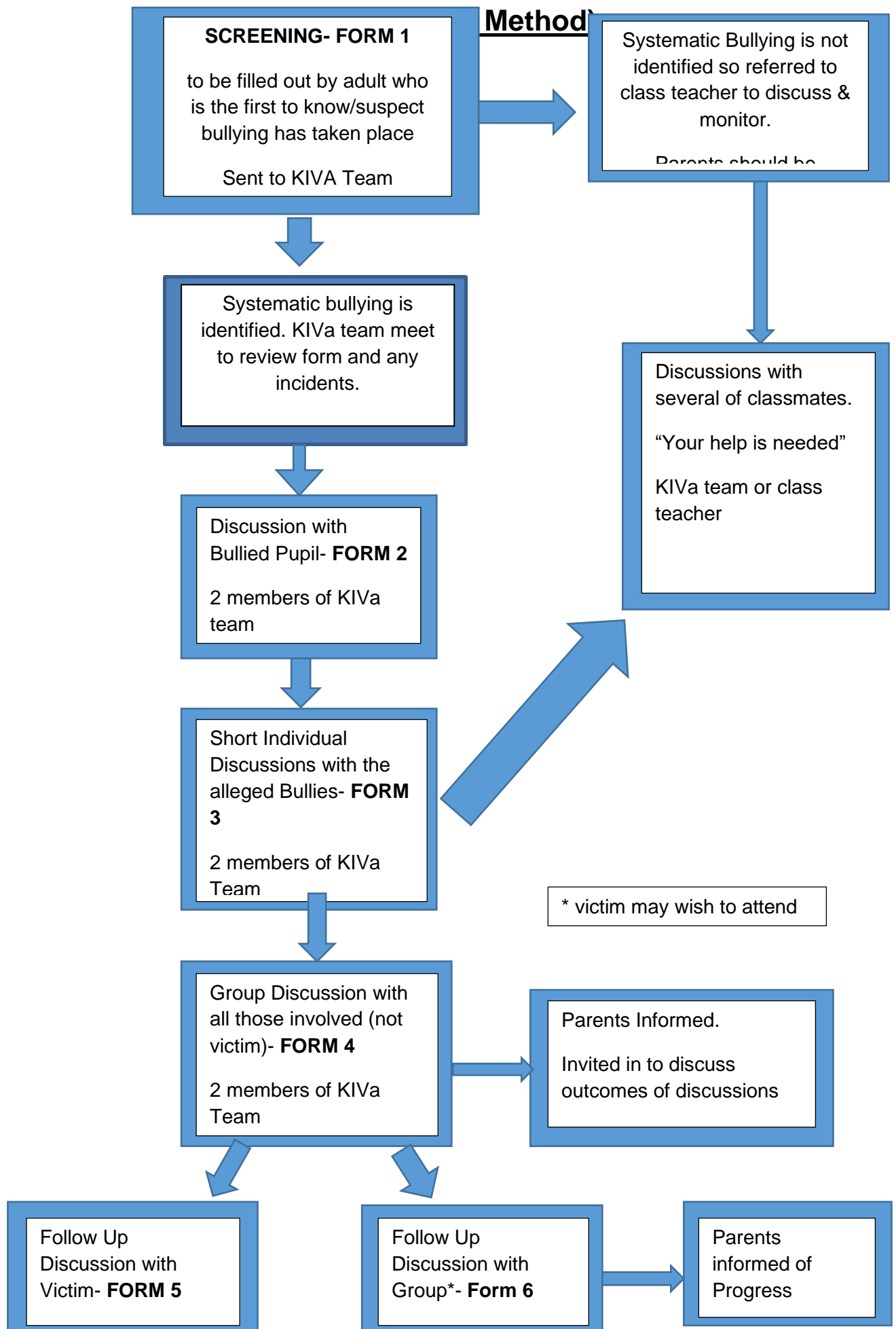
To be filled out by KIVA Team Only the cases of continuous bullying are further directed to the KiVa team to tackle.

9. On the basis of the information acquired this is:

- ◆ a conflict or a fight between children
- ◆ hurt feelings due to misunderstandings
- ◆ continuous bullying

10. Action regarding the case:

Appendix B: KIVA Anti-Bullying Indicated Actions



FORM 2: Meeting with Victim

- Victim describes events including the form the bullying has taken
- To hear the victim's side of the story and their perception of it
- The adults show that they are on the victims side and that they will put an end to the bullying
- The follow up meeting is scheduled for 1 weeks' time
- The victim knows that something is being done and who to go to if things do not get better

FORM 3: Short Individual Meetings with alleged Bullies

- 5-10 minutes each- a surprise. No chance for collusion between group
- To let them know the teachers are aware of the case that someone is feeling bad
- To agree that things have happened and cannot feel good
- To get the pupil to suggest what they could do about it to make a positive impact
- To agree to this & follow up meeting scheduled if just one person involved

FORM 4: Group Discussion with alleged Bullies (if more than one involved)

- Same day as individual meetings
- Together as a group to strength decisions they have already made individually with the KIVa team
- To recognise concern and to commit to working together
- The follow up meeting is scheduled for 1 weeks' time

Parents of those involved to be contacted at this point as the focus is on the pupils rather than parents dialogue with child being passive. When course of action has been set, then parents could be invited in or if after the follow-up phase, the bullying has not stopped.

FORM 5- Follow up with Victim

- Has the bullying stopped?
- Has the situation changed for the better?
- Nothing justifies bullying but how could the victim help the situation to stay positive?
- What do you think should happen next?

FORM 6- Follow up Group discussion

- All pupils who have taken part previously
- Bullied pupil may want to attend
- Has the bullying stopped?
- To ensure they have stuck to the agreements made (and commended if they have)
- Acknowledgment that the change is permanent, bullying has stopped and will not start up again
- How can we make sure that bullying will not start up again?
- Execute sanctions if bullying has not stopped

Parents should be informed of results of follow up meeting and if bullying has not stopped, then bullies' parents brought in to discuss the matter & the sanctions.